

KellyFaber

M O U N T A I N B I K E S



To our customers;

Marin County, California has been acknowledged as the place where the off-road balloon-tire bicycle movement started. Although cycling enthusiasts had built off-road bicycles in other areas as early as 1953, Marin County was the location of the first organized races and tours, as well as the first commercial ventures involved with production of high-tech balloon-tire bicycles and associated products.

K & F MOUNTAINBIKES is an important consultant to the all-terrain bicycle industry.

Our intention is to supply the rider with the best possible equipment he or she can get for the money. We are riders ourselves; our involvement in K & F MOUNTAINBIKES began because we were unsatisfied with the products that were then on the market, and we felt that there was a need for high quality balloon-tire cycling equipment.

We have personally selected the items here as the finest in value and quality. It is our wish that you enjoy to the fullest the mountainbikes, parts and accessories we at K&F offer here.

We share with you the enjoyment of the outdoor way of life.

Sincerely,

Charles Kelly
Gary Fisher

Charles Kelly promoted the first recorded competitive events for off-road bicycles, the "Repack" series, starting in 1976. This was the beginning of the balloon tire movement. These races led directly to the development of the features that have become the standard, as racers found which parts and designs could stand up to the bone-jarring descents. Charles is one of the twenty riders to have completed the course in under five minutes.

Charles is known in the bicycle industry as the author of numerous articles on off-road bicycles in magazines, including **OUTSIDE** and **BICYCLING**. Charles edited (with Gary Fisher) much of the bicycle section of **THE NEXT WHOLE EARTH CATALOG**, and he is currently a contributing editor for the **FAT TIRE FLYER**, a publication specializing in balloon-tire bikes. Also in demand as a lecturer, he has addressed groups from California to New York, and in 1982 was chosen as a speaker at both the Pearl Pass Fat Tire Seminar and the banquet for the Crested Butte to Aspen Tour.

Gary Fisher is a foremost expert in the United States on the subject of bicycle components. His background includes some twenty years of USCF racing, fifteen years of which were category one. He has served as mechanic on the United States National Team in Europe, and wrote regularly for BICYCLING magazine as a bicycle tester for eight years. He has also contributed to BIKE TECH magazine.

Gary's off-road experience is as extensive as any; he is the holder of the course record on the famous "Repack" downhill course, and has won every off-road race he has entered in California. He is currently enjoying popularity as a lecturer on the subject, with appearances in the last year at the Las Vegas, New York and Chicago bike shows. Co-holder (with Charles Kelly) for a "perfect attendance" record on the Annual Crested Butte to Aspen Clunker Tour, having participated five times.

The K & F MOUNTAINBIKE is not just a frameset, it's also a complete system of components chosen by way of our long experience with these bikes from the best of bicycle and motorcycle components. In those cases where no components exist that fit our exact needs, we have either contracted their manufacture or manufactured them ourselves. The end result is a machine that has been called "the world's most versatile bicycle." The same bicycle can be used as a utility bike, a touring bike, or even a racing bike for the new sport of off-road bicycle competition.

The K & F MOUNTAINBIKE makes a fine commute and utility bicycle, with stability, braking and handling on the street that far exceeds the limits of ordinary bikes. No other bike is better suited to the perils of inner city riding, such as potholes, tracks, curbs and sewer grates.

The K & F MOUNTAINBIKE is an alternative for the camper or tourist who may wish to ride anywhere. For paved roads PANARACER street tires can be inflated to 70psi; these tires are virtually indestructible under all touring conditions, and are widely available. Rolling resistance on these new tires approaches that of conventional high pressure tires. Semi upright BULLMOOSE handlebars give the rider a better view of the road as well as firmer, more comfortable control of the loaded bike.

For adventurous and competitive riders the K & F MOUNTAINBIKE is the bike to beat--but not many do. K & F MOUNTAINBIKES have been winners at all three runnings of Reseda to the Sea, both times at the Central Coast Clunker Classic, both Coyote Derbies, and the first annual Whiskeytown Downhill. In the 1982 USCF national cyclocross championships a "COMPETITION" was sixth, with a sixteen year old rider. The Crested Butte criterium and the Santa Rosa "Rockhopper" were both won in 1982 by K & F MOUNTAINBIKES.

Well, that's the story. One more thing; you've known us as Ritchey/MountainBikes, but we're changing our name to one that we feel better describes our company. We are continuing to handle Tom Ritchey's fine framesets, but in the future look for us as K & F MOUNTAINBIKES.

K & F M O U N T A I N T



"MOUNT TAM"

Our more affordable MOUNTAINBIKE. Retains the responsiveness and resiliency of higher priced models. *"The Best Engineered All-Terrain Vehicle for under \$35,000."*

Frameset: K & F MOUNTAINBIKES production frameset designed by Tom Ritchey for one water bottle, cable stops and guides, and cantilever brakes. Chrome-moly TANGE fork. In sizes 20", 21½", 23" and colors gray or blue.

Bottom Bracket: Sealed bearing custom.

Seatpost Quick-release: SUNTOUR QR-120.

Crankset: SUGINO AT triple.

Pedals: SR MP-130.

Rear Derailleur: SHIMANO DEORE XT.

Front Derailleur: SHIMANO DEORE XT.

Shift Levers: SHIMANO DEORE XT.

Handlebar/stem: "BULLMOOSE" fillet brazed.

Freewheel: SHIMANO UNIGLIDE 6-speed 13-30.

Seatpost: SR LAPRADE.

Saddle: ELINA touring.

Headset: HATTA SWAN.

Hubs: SHIMANO DEORE XT sealed bearing with solid chrome-moly axle, six-speed.

Rims: Alloy box section anodized.

Spokes: 14 gauge.

Tires: IRC RACER X-1 26 x 2.125 balloon tires.

Brake Levers: SHIMANO DEORE XT.

Chain: D.I.D. LANNER.

Brakes: MAFAC tandem cantilever.

Grips: GRAB-ON MX-1.

Weight: 30 lbs.



"EVEREST"

This is the bike that started a movement, now including the SHIMANO DEORE XT component package: uncompromising quality for discerning bicyclists.

Frameset: K & F MOUNTAINBIKES lugless frameset designed by Tom Ritchey with braze-ons for one water bottle, cable stops and guides, and cantilever brakes. Ritchey fork, in sizes 19" to 26" in one inch increments, and 18" for 24" wheels, choice of ten colors: Dark Continental Blue, Light Rich Blue, Medium Jade, Bright Green, Dark Firethorn, Dark Burgundy, Slate Gray, Pewter Gray, Dark Chestnut, Red. All colors are Imron metallic except Red.

Bottom Bracket: Sealed bearing custom.

Seatpost Quick-release: SUNTOUR TECH or CAMPAGNOLO.

Crankset: Extra-long TA CYCLOTOURIST or SUGINO AT triple.

Pedals: MKS BM-10 with anodized alloy cage and chromemoly.

Rear Derailleur: SHIMANO DEORE XT.

Front Derailleur: SHIMANO DEORE XT.

Shift Levers: SHIMANO DEORE XT.

Handlebars: "BULLMOOSE" one-piece handlebar/stem with brazed fillets.

Freewheel: SHIMANO UNIGLIDE 600 6-speed.

Seatpost: SR LAPRADE.

Saddle: AVOCET Touring II, men's or women's.

Headset: CAMPAGNOLO RECORD.

Hubs: PHIL WOOD or COOK BROTHERS.

Rims: ARAYA 7X alloy 26 x 1.75.

Spokes: DT stainless 14 gauge.

Tires: IR RACER X-1 26 x 2.125 balloon tires.

Brake Levers: SHIMANO DEORE XT.

Brake Cables: Heavy-duty motorcycle cables with lined housings.

Chain: D.I.D. LANNER.

Brakes: SHIMANO DEORE XT.

Grips: MAGURA motorcycle grips.

OPTIONS: See form in back of catalog.

Weight: 30 lbs.

A I N B I K E S



“COMPETITION”

For the serious off-road racer the 25 lb. “COMPETITION” is the ultimate in lightweight off-road machinery. The state of the art begins here.

Frameset: K & F MOUNTAINBIKES frameset designed by Tom Ritchey and made with COLUMBUS SP double-butt tubing (oversize top tube) and hand constructed brazed and filleted lugs. Braze-ons for one water bottle, cable stops and guides, and cantilever brakes. Sizes 19-24 inches in one inch increments, ten different colors: Dark Continental Blue, Light Rich Blue, Medium Jade, Bright Green, Dark Firethorn, Dark Burgundy, Slate Gray, Pewter Gray, Dark Chestnut, Red. All colors are Imron metallic except Red.

Bottom Bracket: Sealed bearing TOM RITCHEY custom.

Seatpost Quick-release: CAMPAGNOLO.

Crankset: Extra-long TA CYCLOTURIST double.

Pedals: BMX type with anodized alloy cage and chrome-moly shaft. Choice of SUNTOUR MP-1000, or SUNTOUR X-C.

Rear Derailleur: SUNTOUR CYCLONE GT II

Front Derailleur: SUNTOUR CYCLONE.

Shift Levers: SUNTOUR MOUNTECH thumbshifters.

Handlebar/stem: TOM RITCHEY “BULLMOOSE” clamp-on type.

Freewheel: SHIMANO FREEHUB 6-speed 12-28.

Seatpost: SR LAPRADE.

Saddle: AVOCET Touring II.

Headset: EDCO COMPETITION alloy.

Hubs: SHIMANO DURA-ACE EX Freehub.

Rims: ARAYA 7 x 26 x 1.75 alloy box construction.

Spokes: DT stainless steel butted spokes with alloy nipples.

Tires: IRC RACER X-1 26 x 1.75 knobby.

Tubes: IMPAIR latex.

Brake Cables: Heavy-duty motorcycle cables and lined housings.

Chain: D.I.D. LANNER.

Brakes: MAFAC tandem cantilever.

Weight: 25 lbs.



“TANDEM”

The K & F MOUNTAINBIKES tandem ushers in a new era in riding double. Handling that rivals that of solo bikes combined with durability necessary for riding on gravel or dirt roads, and speed for paved roads.

Frameset: K & F MOUNTAINBIKES TANDEM frameset, designed by Tom Ritchey made of oversize straight gauge chrome-moly tubing, lugless construction. Braze-ons for three water bottles, cable stops and guides, and cantilever brakes. In two sizes, 21.5" x 20" x 23" x 21.5", and ten colors. Top tube, down tube and lateral are all 1.25" O.D.

Bottom Bracket: Sealed bearing with eccentric front.

Crankset: TA CYCLOTURIST triple with crossover drive. Crank length 175-185mm.

Pedals: MKS BM-10.

Rear Derailleur: HURET DUOPAR “ECO.”

Front Derailleur: SHIMANO DEORE XT.

Shift Levers: SUNTOUR thumbshifters.

Handlebars: NITTO “BULLMOOSE” (front) and MAGURA alloy with TOM RITCHEY stoker stem.

Freewheel: SUNTOUR NEW WINNER 7-speed.

Seatposts: SR LAPRADE.

Seatpost Quick Release: CAMPAGNOLO.

Saddles: AVOCET Touring II.

Headset: HATTA “SWAN.”

Hubs: PHIL WOOD (140mm double threaded rear).

Rims: ARAYA 7X 26 x 1.75.

Spokes: DT stainless steel 14 gauge.

Brake Levers: MAGURA motorcycle levers (dual-pull rear).

Brake Cables: Heavy-duty motorcycle cables and housings.

Brakes: MAFAC tandem cantilevers front and rear and ARAI drum (rear).

Tires: PANARACER 26 x 2.125 balloon tires.

Chain: SEDIS-SPORT.

Weight: 50 lbs.

PARTS

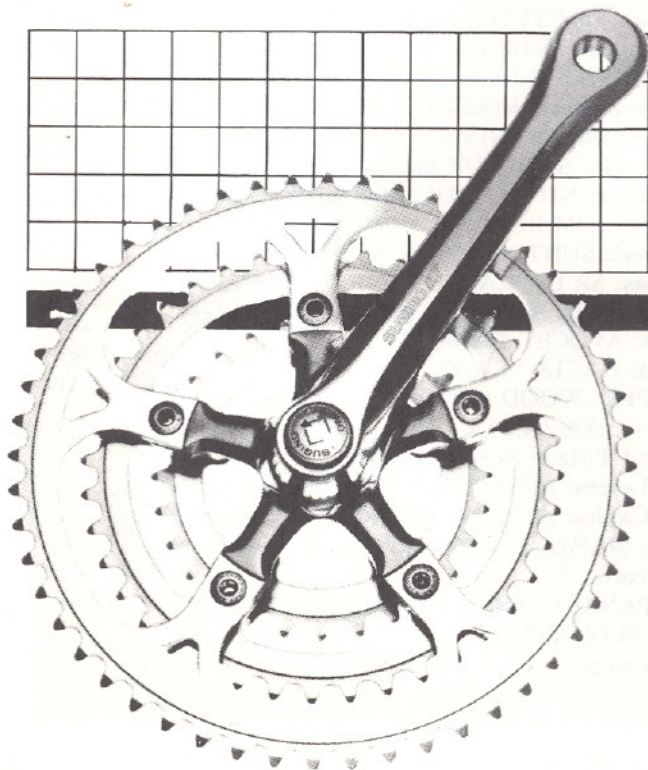
Our component selection is based on years of off-road experience, during which time we have literally shattered thousands of dollars worth of parts. We select components on the basis of durability and function under the trying conditions found in off-road racing and touring.

TA CYCLOTOURIST CRANKSET

The TA CYCLOTOURIST crankset is the most versatile we know of with respect to possible combinations of gearing and crankarm length. Available in lengths of 175, 180 and 185 mm, with chainring sizes from 26t to 54t, the CYCLOTOURIST can be set up as either a single, double or triple; we use the triple as standard because, even though there is some gear overlap, the extra low gear gives the rider the hill climbing power necessary to glide up steep slopes with uncertain traction.

TA CYCLOTOURIST DOUBLE#01102
TA CYCLOTOURIST TRIPLE#01103
CYCLOTOURIST components#01110---#01183

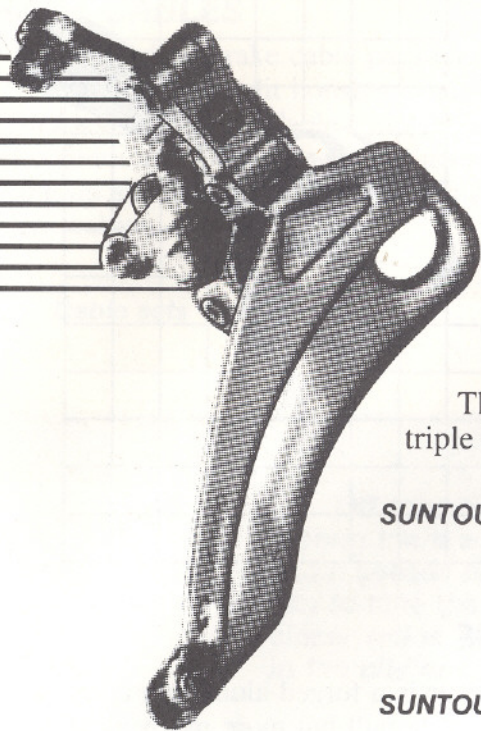
Triple crankset weight (180mm w/26/38/50) is 595g.



SUGINO AT CRANKSET

Versatile and tough, the stiffest triple we know about. Outer chainrings interchange with MIGHTY TOUR and go down to 34T. Inner chainring interchanges with AVOCET and goes down to 24T. Available in these combinations only: 175mm with 24/36/46 or 180mm with 24/38/48. Weight, 180mm with 24/38/48: 704g.

SUGINO AT CRANKSET#01201



SHIMANO DEORE XT FRONT DERAILLEUR

The DEORE XT front derailleur is beautifully finished and has a large cage for wide range triple gearing like that of the Simplex. Slotted cable stop, works with or without cable housing. Works best with SUGINO AT crankset.

SHIMANO DEORE XT front derailleur, wt: 212g#01421

SUNTOUR MOUNTECH FRONT DERAILLEUR

The MOUNTECH is a light alloy front changer for use with wide range triple front gearing. Will handle chainrings smaller than 26T, works with or without cable housing stop.

SUNTOUR MOUNTECH front derailleur, wt: 100g#01406

SUNTOUR AG TECH FRONT DERAILLEUR

The AG TECH is a slightly heavier and less expensive version of the MOUNTECH.

SUNTOUR AG TECH front derailleur, wt: 128g#01409

HURET DUOPAR REAR DERAILLEUR

The HURET DUOPAR is designed to handle wide range touring gears, and for this reason it is perfect for K & F MOUNTAINBIKES. The DUOPAR will shift into a lower gear even under the extreme torque loading of a steep climb, and shifts quickly in the higher gears. Two models are available, the "ECO" (steel and aluminum) and a titanium model. Weights: "ECO," 300g, TITANIUM, 260g.

HURET DUOPAR "ECO," wt: 300g#01451

HURET DUOPAR TITANIUM, wt: 260g#01451T

SHIMANO DEORE XT REAR DERAILLEUR

The DEORE XT is a redesigned version of the DEORE and is made to handle the wide range gearings of off-road bicycles. The XT has a cover over the upper jockey to prevent its being tangled in the spokes.

SHIMANO DEORE XT rear derailleur, wt: 254g#01465

SUNTOUR MOUNTECH REAR DERAILLEUR

The MOUNTECH features a double pivoting action and a long arm to take up plenty of chain. Designed to shift under load and ruggedly built to take off-road abuse. 34T maximum rear cog.

SUNTOUR MOUNTECH rear derailleur, wt: 277g#01458

SUNTOUR SUPERBE TECH REAR DERAILLEUR

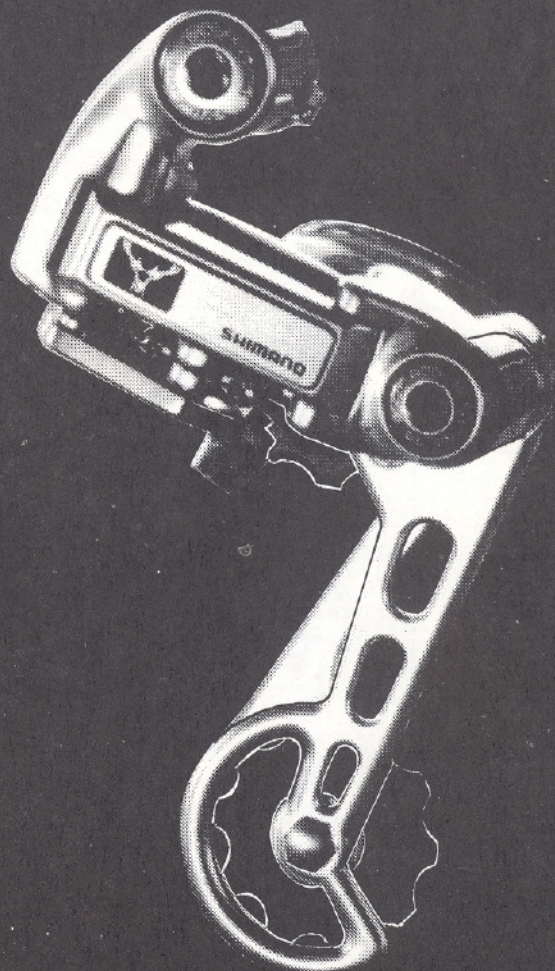
The SUPERBE TECH features the double-pivot action and long arm, as well as a sealed mechanism that resists the effects of dirt and water. Cable routing is direct-pull, which requires a cable guide on the bottom of the chainstay (a clamp-on is supplied with the derailleur).

SUNTOUR SUPERBE TECH rear derailleur, wt: 302g#01462

SUNTOUR CYCLONE M-II REAR DERAILLEUR

The CYCLONE M-II is a light, fast-shifting rear derailleur well suited for close range gearing.

SUNTOUR CYCLONE M-II rear derailleur#01460

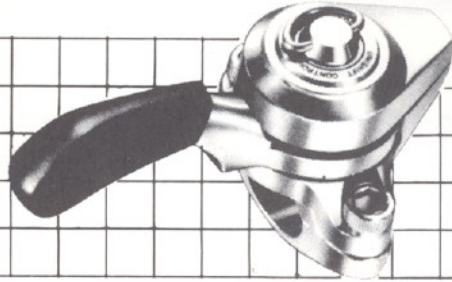
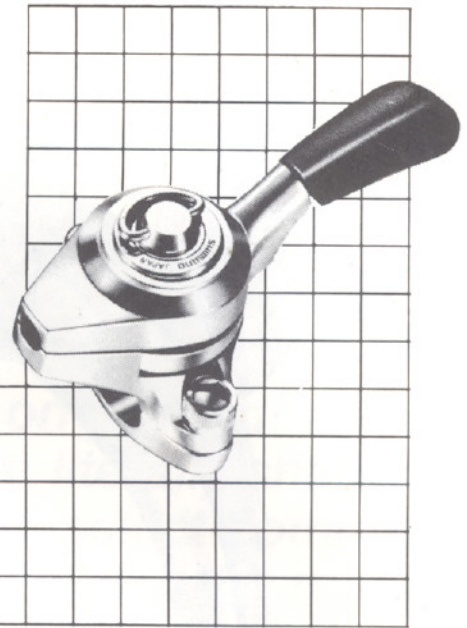


THUMBSHIFTERS

The thumbshifter is safely and conveniently mounted to the inside of the brake lever and is available in both left and right.

SUNTOUR POWER thumbshifter (R), wt: 78g#01511R
SUNTOUR POWER thumbshifter (L), wt: 78g#01511L

SHIMANO DEORE XT thumbshifter (PR), wt: 212g#01521



SHIMANO BRAKE LEVERS

The SHIMANO brake lever is a forged aluminum alloy "dog-leg" lever with less cable pull but more mechanical advantage than the MAGURA.

Accepts standard motorcycle cables, black only.

SHIMANO brake lever pair, wt: 320g#01641

MAGURA BRAKE LEVER COVERS

Keep the dust out and dress up your bike, but most of all, look good with these covers for your brake levers; will fit MAGURA, SHIMANO or DIA-COMPE levers.

MAGURA lever cover pair/black#01611B

MAGURA lever cover pair/red#01611R

MAGURA BRAKE LEVERS

MAGURA brake levers are the standard for international motocross competition. The "dog-leg" design provides excellent mechanical advantage, and the malleable forged aluminum alloy lever can be bent double and straightened without breaking. We carry both long and short versions of these levers; we recommend the long levers only for those riders with large hands.

MAGURA brake lever, long (L), wt: 165g#01601LL

MAGURA brake lever, long (R), wt: 165g#01601LR

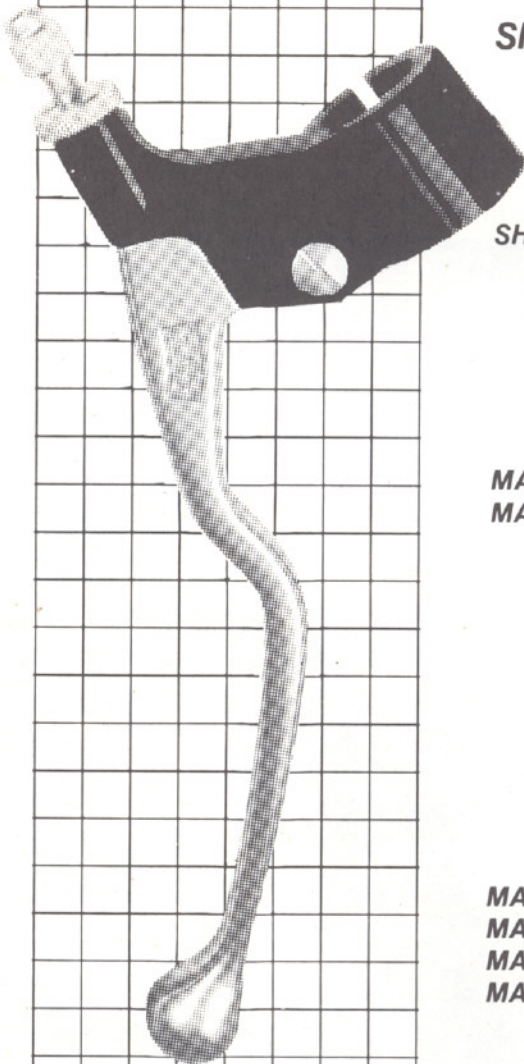
MAGURA brake lever, short (L), wt: 150g#01601SL

MAGURA brake lever, short (R), wt: 150g#01601SR

DIA-COMPE BRAKE LEVERS

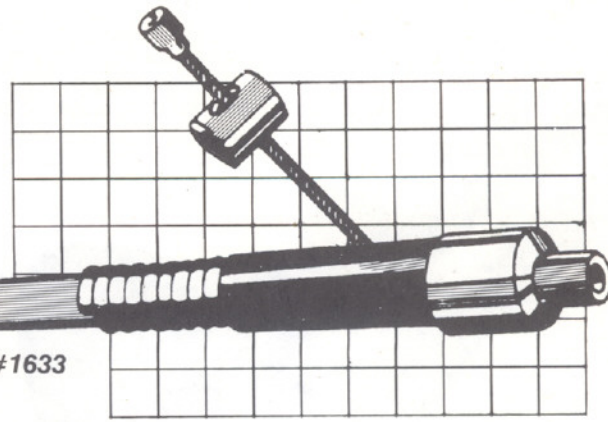
DIA-COMPE brake levers are made of forged aluminum alloy with a dog-leg design. Accepts standard bicycle brake cables; silver lever arm, black clamp.

DIA-COMPE brake lever pair, wt: 270g#01617



BRAKE CABLES

Our standard brake cable package is designed for cantilever brakes with a split housing, and we have adapters for Magura levers (8mm). Cable cores are a thick .78", housing is a fat 5.5mm and Delrin lined. We also have facilities for making up any length cable and housing sets, including braided tandem cables.



Cable sets#1602D--#1633

SHIFTING

Off road riding involves new problems with gearing, among them wide gear ranges and fast shifting at slow chain speeds under load. Our standard gear ranges are chosen to take the rider over the highest mountain passes, but closer ratios are available if the bike is to be used primarily in the city or on flat terrain.

GEARING

On extremely rough terrain, especially at high altitude, it is essential for the rider to stay in a low gear (in some cases below 30") in order to maintain torque. Always look ahead and plan for shifts, since it may become impossible to shift if speed drops suddenly. The result of delaying a shift too long is "bogging down," forcing a dismount. It is usually better to be in a gear that is too low than one that is too high.

FREEWHEELS

The SUNTOUR NEW WINNER freewheel is a precision freewheel enough to take off road abuse. In either regular 6-speed or ultra-7 spacing.

SUNTOUR NEW WINNER freewheels#01726--#01736

The SHIMANO UNIGLIDE 600 "Twist-tooth" freewheel is available in five and six speed regular spacing and a variety of gearings. Uses the same freewheel puller as the NEW WINNER.

SHIMANO UNIGLIDE 600 freewheels#01762--#01765B

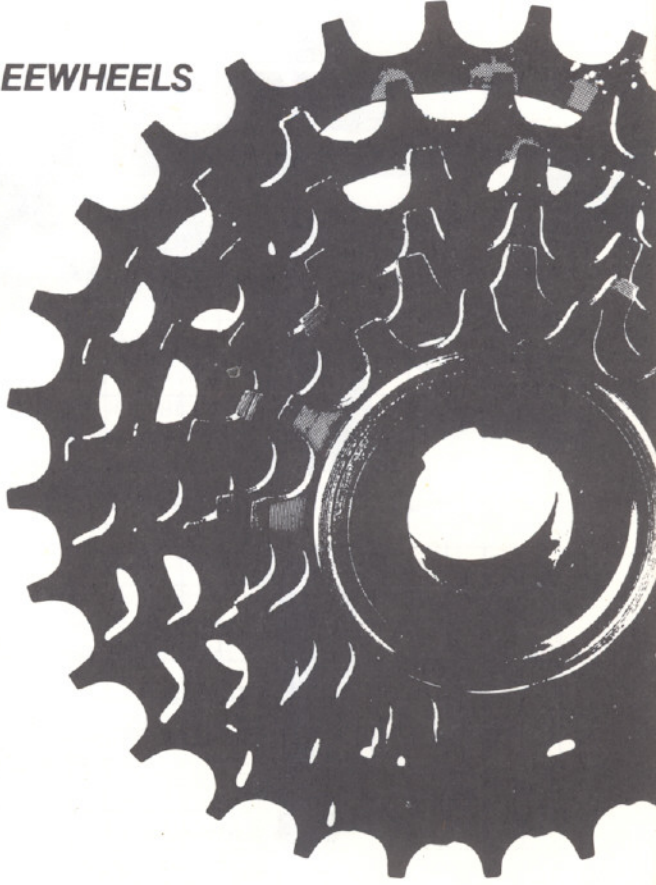
CHAINS

Use the SEDIS SPORT for ultra-six or ultra-seven freewheels; a long-lasting chain, narrow for ultra spacing.

D.I.D. LANNER is well known in the motorcycle industry for their chains. The bicycle chain has cambered sideplates for positive shifting.

SEDIS-SPORT chain, wt: 340g#01801

D.I.D. LANNER black chain, wt: 340g#01805



SEATPOST SR LAPRADE

220mm long, single bolt adjustment, available in 26.8. weight: 258g.
SR LAPRADE seatpost#02001

SEATPOST QUICK-RELEASE

CAMPAGNOLO MOUNTAINBIKES custom quick release seat binder bolt. The strongest, longest lasting and best working quick release.

CAMPAGNOLO SP quick-release, wt: 73g#02051
 5mm shaft.
SUNTOUR QR-170 SP quick release, wt: 72g#02060
 6mm shaft.
SUNTOUR QR-120 SP quick release, wt: 97g#02061
 9mm shaft.
SHIMANO AX SP quick-release, wt: 75g#02063
 5mm shaft.

SADDLES

AVOCET TOURING SADDLES

Highly scuff resistant and light. TOURING II has more padding than the TOURING I. RACING saddle is narrower.

Weight: Women's, 350g; Men's, 400g, Racing, 337g.

AVOCET MEN'S TOURING I#02101
AVOCET MEN'S TOURING II#02102
AVOCET WOMEN'S TOURING I#02103
AVOCET WOMEN'S TOURING II#02104
AVOCET RACING SADDLE#02105

ELINA SADDLE

This is a padded leather covered saddle with spring-steel rails.

ELINA saddle, wt: 396g#02112

BROOKS B-72 SADDLE

The BROOKS B-72 is a wide leather saddle mounted on a four-wire, single loop frame. Weight: 551g.

BROOKS B-72 saddle#02111

HUBSETS

PHIL WOOD HUBS

These sealed bearing hubs are made for K & F MOUNTAINBIKES in our extra-wide six speed rear spacing, 130mm. 1/4" allen-keyed end bolts or quick-release. Unbendable axles and guaranteed performance!

PHIL WOOD hub pair, 100/130mm, wt: 549.5g#02502
PHIL WOOD hub pair, 100/130mm QR, wt: 580g w/QR #02503QR

COOK BROTHERS ALPINE HUBS

These hubs were designed by K & F MOUNTAINBIKES and feature oversize (1/2") chrome-moly axle, countersunk spoke holes, 1/4" allen-key endbolts, and a knurled spacer that really puts the bite on dropouts. The sealed bearings are held in by an allen-keyed spacer and are easily removed for service. The bearing is a common size available from most bearing suppliers. For six or seven speed.

COOK BROTHERS hub pair, 100/130mm, wt: 625g#02521
COOK BROTHERS hub bearing#02521B

SHIMANO DURA-ACE EX FREEHUB SET

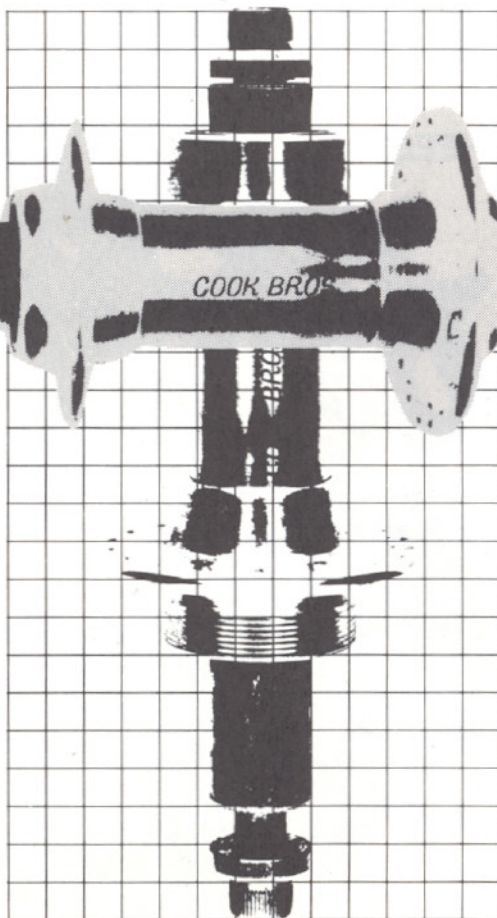
These are the hubs we use for competition or for road use when the higher gears available with the 11 and 12 tooth cogs are handy. The free-wheel is built into the rear hub and save weight; cogs are available for (six speed) 11 tooth to 32 tooth. Weight, pair with freewheel (12-18 6-sp), 613g.

DURA-ACE EX FREEHUB pair#02575
DURA-ACE EX FREEHUB cog set#02575C

SHIMANO DEORE XT HUBSET

The SHIMANO DEORE XT hubset is designed specifically for off-road use. Loose-ball construction with dirt and moisture seal. Chrom-moly axle, spacers for 130, 125 or 120mm rear spacing.

DEORE XT hub pair#02570



SPOKES

UKAI and ARAYA rims all use 270mm spokes for front and non-drive side rear, 268mm for drive side for four cross on nearly any size hub. 36 #14 spokes, 252g, 36 14/15 butted spokes, 214 g. 36 brass nipples, 32g, 36 alloy nipples 10g.

Spokes and nipples#02801--#02921

UKAI OR ARAYA RIMS

These are high quality rims developed for BMX racing. In silver or black, tough and light! Weight: 587g.

Alloy rims#02831--#02911s

TIRES PANARACER

These tires are for general street riding or touring. They feature a smooth tread with a raised, 1/4" wide hard ridge in the center which reduces rolling resistance to that of a narrow tire. Although the manufacturer suggests 35-40psi, we have run them at 70psi on century rides and extended tours with no problems; at this pressure the ride is nearly as fast as on narrow tires. Two sizes, 1.75 and 2.125.

PANARACER 26 x 1.75 tire#03105

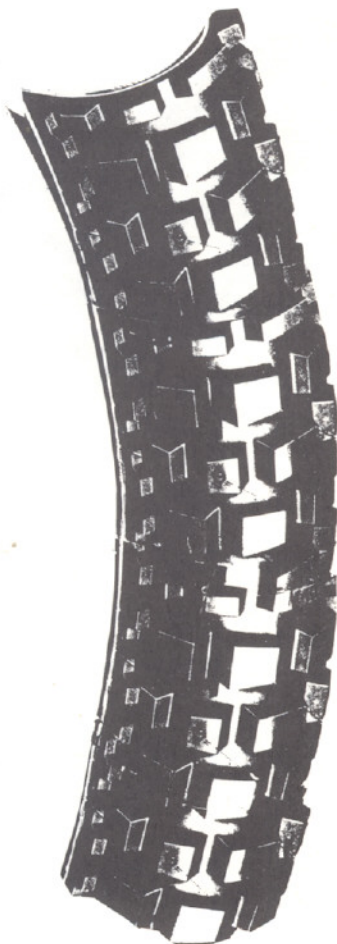
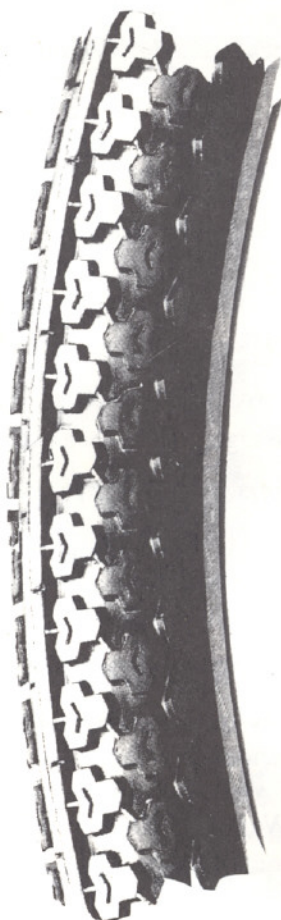
PANARACER 26 x 2.125 tire#03106

IRC RACER X-1

The biggest lugs yet on an off-road bicycle tire, combined with a light-weight skinwall construction. The deep, widely spaced lugs and round cross-section provide excellent cornering and climbing traction on all surfaces, yet release mud quickly. Available in both 1.75 and 2.125, this tire has the best bite of any we have seen.

IRC RACER X-1 26 x 2.125 tire#03141

IRC RACER X-1 26 x 1.75 tire#03142



HANDLEBARS

"BULLMOOSE"™ HANDLEBAR/STEM

The "BULLMOOSE" handlebar-stem represents a significant advance in off-road cycling technology. The triangulated design gives more side to side strength so the rider is able to pull on these bars for whatever reason and get response. The carefully chosen tubing gauges keep weight down.

EVEREST BULLMOOSE HANDLEBAR/STEM

These handlebars are designed for use on our EVEREST model. Custom made by Tom Ritchey of 4130 chrome-moly, this handlebar clamps onto a sleeve silver-soldered into the steerer. In both high- and low-rise configurations.

TOM RITCHEY BULLMOOSE handlebar#03501A-#03501B

IMPORTED BULLMOOSE HANDLER/STEM

This is an imported version of the BULLMOOSE handlebar, designed by Tom Ritchey at the Nitto factory. The Nitto company is the premier Japanese handlebar manufacturer. The Nitto handlebar is chrome-plated and available in brazed construction, which has been found to be stronger than the T.I.G.-welded variety; stem sizes 22.2mm and .833".

NITTO BULLMOOSE handlebar#03521-#03525

MAGURA SILVER ALLOY TRIALS HANDLEBAR

The MAGURA trials handlebar is a high quality flat motorcycle handlebar made of extremely tough aluminum alloy, with a re-inforcing insert where the stem clamps.

MAGURA alloy trials handlebar#03552

HANDLEBAR SHIMS

In order to fit a 7/8" motorcycle bar to a standard bicycle stem you will need a handlebar shim.

JOE BREEZE HANDLEBAR SHIM

The JOE BREEZE HANDLEBAR SHIM is made of aluminum, with a beveled edge. Specify brand of stem for an exact fit.

JOE BREEZE aluminum handlebar shim#03559

STEEL HANDLEBAR SHIM

This shim adapts a 7/8" handlebar to most bicycle stems.

Steel handlebar shim#03560

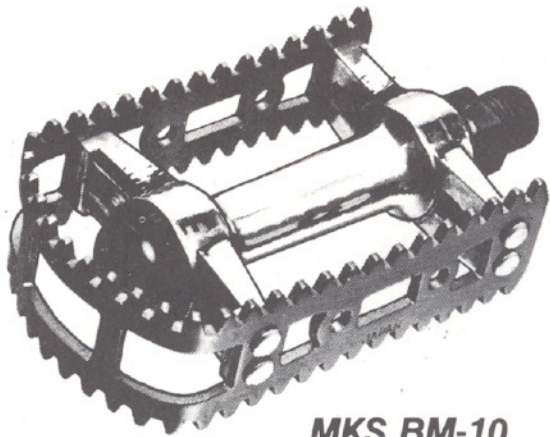
GRAB-ON GRIPS

The Grab-on MX-1 is a soft foam grip. The MX-2 is a thin foam sleeve over a plastic core.

.....#03811---#03814

MAGURA GRIPS

The finest motorcycle grips#03821



MKS BM-10

Appropriately named "Foot-Jaws," these pedals have chrome-moly shafts, black alloy cages and plenty of rounded teeth. Clips and straps will work, all black. Weight: 376g per pair.

PEDALS

SR MP-130 PEDALS

This is a light alloy BMX pedal with a chrome-moly shaft. 9/16" threading for alloy crank only, silver, blue, gold. Will accept clips, but not straps. Weight: 396g per pair.

SUNTOUR MP-1000 PEDALS

These are ultra-light, sealed bearing pedals with a hollow chrome-moly shaft. Clips and straps may be mounted, cage is tough and replaceable. Available in blue, gold and silver; we have the replaceable bearings in stock. Weight: 312g per pair.

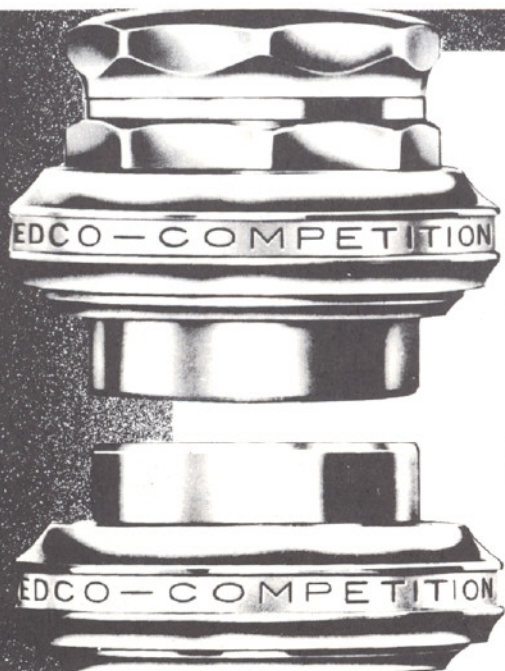
TITRON MX-RADIAL "BEAR TRAP" PEDALS

These are the pedals we have selected for our personal bikes. The cage is large and round for a comfortable feel, and the sharp teeth won't let your feet go. Not recommended for bare feet, or bear feet for that matter, they look as though they could shred your leg if you slip off--but you won't slip off. The sealed bearings and silver alloy cages are replaceable. Weight: 420g per pair.

SUNTOUR X-C OVAL PEDALS

The SUNTOUR X-C OVAL is specifically designed for off-road; the large, comfortable cage has plenty of grip, and the standard bearings with an oil seal on a chrome-moly shaft will deliver extended performance under the most trying conditions. Black reinforced cages will accept modified clips and straps. Weight: 435g per pair.

PEDALS#04001B---#04041G



HEADSETS

CAMPAGNOLO RECORD HEADSET

The standard for quality steel headsets, English only.

CAMPAGNOLO RECORD headset, wt: 182g#04201

EDCO COMPETITION HEADSET

This is a light alloy, precision headset with steel races made in Switzerland. Gold, black or silver, English only, weight: 94g.

EDCO COMPETITION headset#04212

TAILWIND HEADSET SEAL

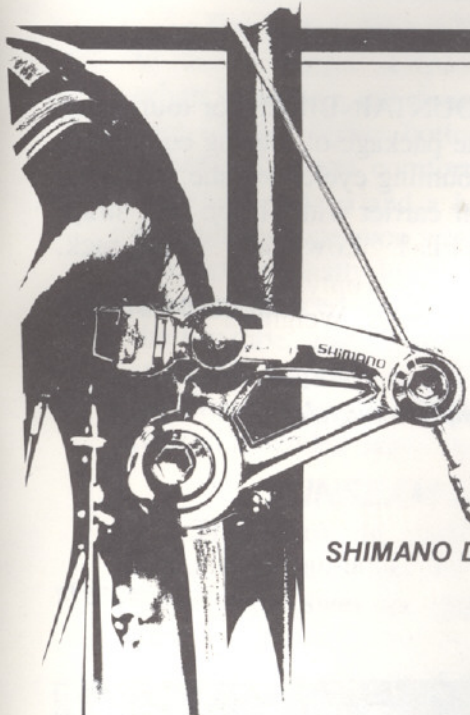
This Neoprene seal covers the bottom headset race to keep out damaging dirt. The most positive seal for a headset, keeps dirt on the outside, where it belongs.

TAILWIND headset seal#04251

DIRT SKIRT

Another approach to keeping the headset clean, the DIRT SKIRT is a shield that goes between the fork crown and the headset crown race to deflect dirt from the bottom race.

DIRT SKIRT#04242



CANTILEVER BRAKES

The cantilever brake is to our knowledge and experience the most powerful rim brake on the market, suitable for use under any conditions. The design is such that the brake does not collect mud, and the long lever arm, coupled with motorcycle levers and cables, provides solid, sure stopping. Pivots must be brazed on by an experienced person to insure proper function. Simple, rugged, and light.

Original French design!

MAFAC tandem cantilever brake set complete (both wheels), wt: 250g ... #04301

Elegant, beautifully polished with incredible power. Toe-in is adjustable and the pointed pads do a good job of deflecting water and mud.

SHIMANO DEORE XT cantilever brake set, wt: 270g #04320

DIA-COMPE CANTILEVER brake set, featuring large cast arms, fully adjustable shoes.

DIA-COMPE cantilever brake set, wt: 290g #04340

K & F MOUNTAINBIKES GRUPPO

We have selected a group of components for use in assembling or upgrading existing framesets. By offering them as a complete group we can offer these parts at a substantial savings. No substitutions or subtractions, please.

Crankset: SUGINO AT triple-- 175mm with 24/36/46
180mm with 24/38/48

Pedals: SR MP-130, blue, gold or silver.

Front Derailleur: SHIMANO DEORE XT.

Rear Derailleur: SHIMANO DEORE XT.

Shift Levers: SHIMANO DEORE XT, with cables and housings.

Freewheel: SHIMANO UNIGLIDE 6-speed, 13-28.

Chain: D.I.D. LANNER black.

Brakes: SHIMANO DEORE XT cantilever, with cables and housings.

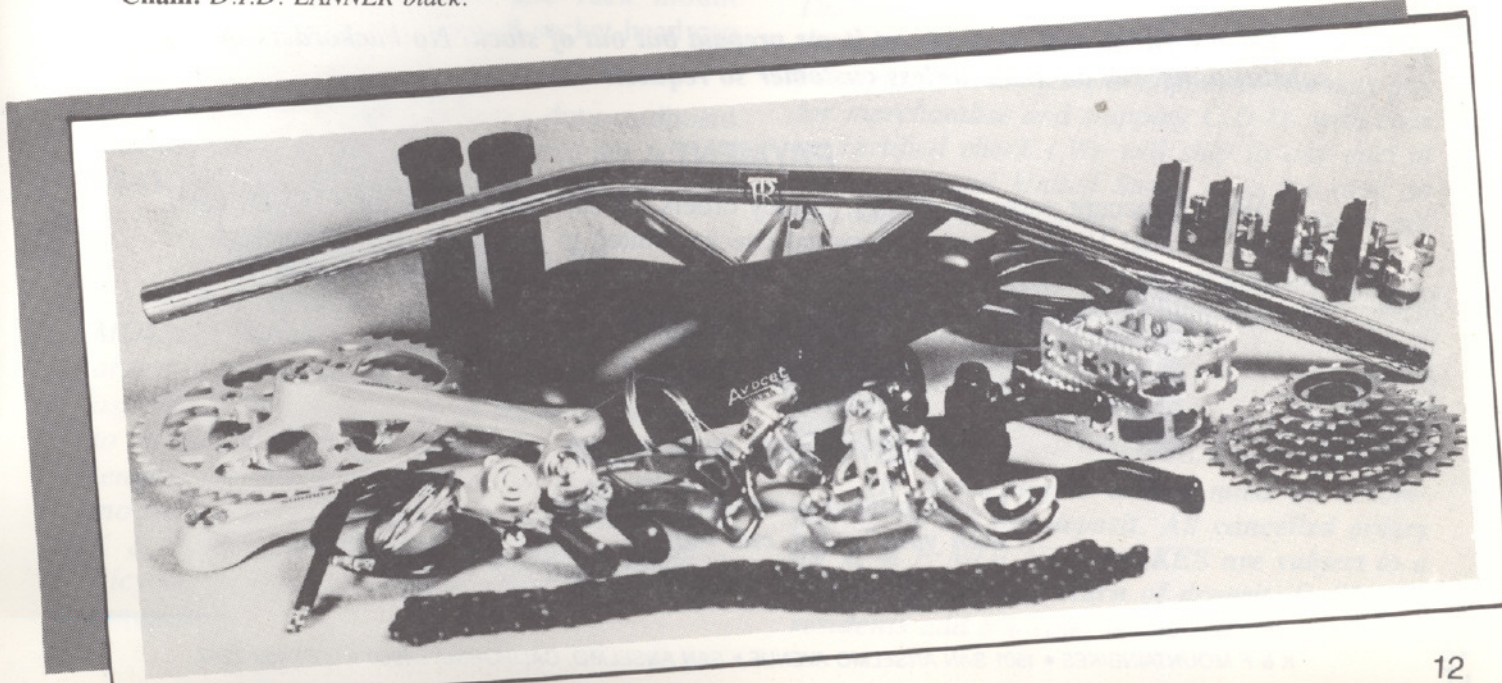
Brake Levers: SHIMANO DEORE XT.

Seatpost Quick-release: SUNTOUR QR-120.

Saddle: AVOCET TOURING II.

Handlebars: MOUNTAINBIKES "BULLMOOSE" one-piece handlebar/stem. (Please specify stem diameter, .833" or 22.2mm.) Construction is "brazed" (fillet bronze-welded).

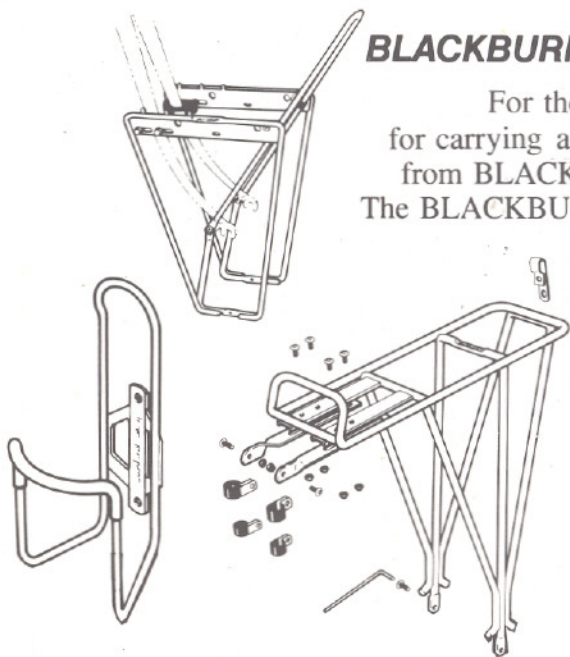
Grips: GRAB-ON MX-1.



ACCESSORIES

BLACKBURN TOURING PACKAGE

For those who plan to use their K & F MOUNTAINBIKES for touring or for carrying any kind of load, we offer a complete package of touring equipment from BLACKBURN, along with custom rack mounting eyelets on the seatstays. The BLACKBURN equipment consists of: SX-1 rear carrier with elastic rack strap, BC-1 aluminum bottle cage, and FL-1 "Low Rider" front rack.



BLACKBURN Products#05030---#05035

*BLACKBURN touring package,
as described (with purchase of complete bicycle)*

PUMPS

SILCA Pump with either
PRESTA or SCHRADER valve tip#05011

PARTS ORDERS

Orders are usually shipped within 36 hours. Please write or type your name and address clearly, using street address (no box numbers, please). You may phone in orders to our order desk (415-459-2247) Monday through Friday, 10:00-5:30 Pacific time.

Shipping within the continental U.S. will be UPS, C.O.D. unless prepaid. California residents must add 6% sales tax. For faster service on parts orders you may specify UPS Blue Label air service at extra cost. This service is not available in California, Washington, Oregon, Idaho, Montana, Utah, or Northern Nevada.

Prepaid shipping and handling charges on parts orders are:

\$2.50 on orders from \$10.00 to \$25.00
\$3.00 on orders from \$25.00 to \$50.00
\$4.00 on orders over \$50.00

Cash refunds will be made on items prepaid but out of stock. No backorders or substitutions will be made unless customer so requests.

PAYMENT

We will accept personal checks, money orders, or certified checks, or C.O.D. cash. MasterCard and VISA accepted. Personal checks limited to purchases of \$200 or less. Customers paying in advance may take a 2% discount. (Note: this does not apply to deposits paid on bicycles.)



CUSTOMER SERVICES

*If you have a question or problem
with your order, call our
Customer Service Line (415) 459-2247*

HOW TO SIZE YOUR K & F MOUNTAINBIKE

The K & F MOUNTAINBIKE was designed to use a longer seatpost to provide clearance when mounting and dismounting and to compensate for the higher bottom bracket. You should be able to stand comfortably over the top tube with one to two and a half inches to spare and get full leg extension while riding. The top tubes are proportionally longer than on road bikes. We use a reinforced seat collar that rises $\frac{3}{4}$ " above the top tube, and we specify a long seatpost. The stock SR Laprade is $8\frac{5}{8}$ " long. We also offer the French Laprade seatpost, $9\frac{1}{2}$ " long and our custom extended seatposts, $11\frac{1}{4}$ " long.

INSEAM LENGTH

The following chart gives the appropriate frame size based on the inseam measurement. These frame sizes are chosen to give the rider a more comfortable touring position; riders who wish a more aerodynamic racing position may want to choose a frame one to two inches smaller. This may mean the rider will want an

extended seatpost. The inseam should be measured with riding shoes on, from the ground to the pubis bone.

GROUND TO TOP OF TOP TUBE

We have provided for comparison the measurement from the ground to the top of the top tube on all frame sizes with our largest tires (26 x 2.125). Note: our 19" frame with 26" wheels has the lowest top tube of any off-road bike on the market, even smaller than what other manufacturers call a $17\frac{1}{2}$ " frame.

Frame Size	Inseam Length	Ground to Top of Top Tube
17" (24" wheel)	27 1/2" - 28 1/2"	27 1/2"
18" (24" wheel)	28 1/2" - 29 1/2"	28 1/2"
19"	29 1/2" - 31"	29 3/8"
20"	30 1/2" - 32 1/2"	30 1/8"
21"	31 1/2" - 33 1/2"	31 1/8"
21 1/2"	32" - 34"	31 1/2"
22"	33" - 35"	32 1/8"
23"	34 1/2" - 36 1/2"	33"
24"	35 1/2" - 37 1/2"	33 7/8"
25"	36 1/2" - 38 1/2"	34 3/4"
26"	37 1/2" - 40 1/2"	35 5/8"

SHIPPING INFORMATION

Framesets receive the following attention:

1. Tubing is cleaned internally of scale, sand, flux, and dirt.
2. Seat tube is reamed to insure roundness, necessary for proper function of seatpost quick-release.
3. Bottom bracket and headset cups are faced, cleaned and installed.
4. Dropout eyelets, bottle and rack mount threads are chased and Grade 8 socket-head cap screws are installed.
5. Each tube is wrapped in heavy-duty cardboard and the frame is packed in a double-ply box. A block is placed between the rear dropouts.

COMPLETE BICYCLES

Every bicycle assembled by K & F MOUNTAINBIKES is built up by one mechanic at a time, and each mechanic is familiar with all aspects of the product, from frame preparation to all-out riding. All cables are cut to exact length, all factory protective sealants are removed and components are lubricated with K & F MOUNTAINBIKES-approved lubricants. Bicycles are all test-ridden, then cleaned and readjusted.

PACKING FOR SHIPMENT

1. Handlebars, pedals, saddle and front wheel are removed. A spacer block is placed between the fork tips.
2. All painted surfaces are wrapped in cardboard; the entire bike is padded and packed in the appropriate size box.
3. We guarantee--no scratches or dents.

Complete bicycles are too large for UPS shipment. We ship by Greyhound or air freight. The customer will be notified on completion of the bicycle; bike will be shipped on receipt of payment. (On air freight shipments you may pay for merchandise and shipping C.O.D. with cash or certified check.) We will ship to any part of the continental United States at a flat rate, so you may figure shipping costs easily. Rates are computed by time zone.

Zone	Bus	Air
Pacific	\$10.00	\$40.00
Rocky Mtn.	\$30.00	\$60.00
Central	\$50.00	\$70.00
Eastern	\$60.00	\$85.00

All retail bicycle orders must be accompanied by a \$300 deposit. All cancelled orders for K & F MOUNTAINBIKES are subject to a charge of \$75 on return of deposit. California residents add 6% sales tax to total cost.

Kelly Fisher
M O U N T A I N B I K E S

1501 SAN ANSELMO AVENUE • SAN ANSELMO, CALIFORNIA 94960

BULK RATE
U.S. POSTAGE
PAID
PERMIT NO. 20
FAIRFAX, CA.

**MOUNTAINBIKES
REPLACEMENT PARTS
ACCESSORIES
ADVICE**

MOUNTAINBIKES PRICE LIST

Compare our discounted prices!

Effective May 28, 1983

These prices are Mail Order only

Prices subject to change

Part #	Item	Price
--------	------	-------

MOUNTAINBIKES

	Everest	Competition	Tandem	Mount Tam
Complete	\$1656.00	\$1999.00	\$2549.00	\$925.00
Frame*	\$ 997.50	\$1178.00	\$1599.00	\$543.00

*Note: All frames require custom bottom bracket \$56.00
Tandem bottom brackets add \$117.00

TA CRANKARMS

01104	TA TANDEM CROSSOVER ARM SET 175, 180 OR 185mm	\$115.00
01112	TA CRANKARM PAIR 175mm	30.80
01112B	TA CRANKARM PAIR 175mm BLACK	40.80
01112A	TA CRANKARM PAIR 177.5mm	30.80
01113	TA CRANKARM PAIR 180mm	30.80
01113B	TA CRANKARM PAIR 180mm BLACK	40.80
01114	TA CRANKARM PAIR 185mm	30.80

TA CHAINRINGS

01126	TA INNER CHAINRING 26T	6.65
01136	TA INNER CHAINRING 36T	8.75
01138	TA INNER CHAINRING 38T	8.75
01140I	TA INNER CHAINRING 40T	8.75
01142I	TA INNER CHAINRING 42T	8.75
01144I	TA INNER CHAINRING 44T	8.75
01142	TA OUTER CHAINRING 42T	8.75
01144	TA OUTER CHAINRING 44T	8.75
01149	TA OUTER CHAINRING 49T	8.75
01151	TA OUTER CHAINRING 51T	8.75
01152	TA OUTER CHAINRING 52T	9.45
01154	TA OUTER CHAINRING 54T	12.50
01142T	TA TANDEM TIMING RING 42T	9.45
01171	TA TRIPLE BOLT SET	2.90
01172	TA DOUBLE BOLT SET	2.40
01181	TA ARM TO CHAINRING BOLT SET	1.40
	TA DOUBLE CRANKSET (USING ABOVE SIZES)	44.95
	TA TRIPLE CRANKSET (USING ABOVE SIZES)	49.95
	(COMPLETE CRANKSETS W/O BOTTOM BRACKET)	
01202	SUGINO TRIPLE CRANKSET (W/O BB) 175mm ARMS 24/36/46	54.95
01203	SUGINO TRIPLE CRANKSET (W/O BB) 180mm ARMS 24/38/48	54.95

Part #	Item	Price
--------	------	-------

DERAILLEURS

01406	SUNTOUR MOUNTECH FRONT	9.40
01409	SUNTOUR AG TECH FRONT	7.25
01421	SHIMANO DEORE XT FRONT	12.80
01451	HURET DUOPAR ECO REAR	22.95
01451T	HURET DUOPAR TITANIUM REAR	59.00
01458	SUNTOUR MOUNTECH REAR	16.25
01460	SUNTOUR CYCLONE M-II REAR	29.50
01462	SUNTOUR SUPERBE TECH REAR	27.95
01465	SHIMANO DEORE XT REAR	19.50

SHIFT LEVERS

01511L	SUNTOUR POWER SHIFTER LEFT	\$7.95
01511R	SUNTOUR POWER SHIFTER RIGHT	7.95
01521	SHIMANO DEORE XT SHIFTER PAIR	23.50

BRAKE LEVERS

01601LL	MAGURA BRAKE LEVER (LONG) LEFT	19.95
01601LR	MAGURA BRAKE LEVER (LONG) RIGHT	19.95
01601SL	MAGURA BRAKE LEVER (SHORT) LEFT	19.95
01601SR	MAGURA BRAKE LEVER (SHORT) RIGHT	19.95
01611B	MAGURA LEVER COVER PAIR BLACK	4.25
01611R	MAGURA LEVER COVER PAIR RED	4.25
01612	MAGURA DUAL-PULL LEVER (RIGHT)	34.50
01616	SHIMANO DEORE XT BRAKE LEVER PR.	24.50
01617	DIA-COMPE BRAKE LEVER PAIR	14.95

CABLES

01620D	2000mm BRAIDED DERAILLEUR CABLE	2.50
01621F	BRAKE CABLE CORE 24" (FRONT)	1.70
01621R	BRAKE CABLE CORE 50" (REAR)	2.20
01621S	BRAKE CABLE SET/SPLIT HOUSING	7.00
01621X	BRAKE CABLE SET/FULL HOUSING	7.00
01622DF	TANDEM DRUM FRONT BRAKE CABLE	3.95
01266FB	TANDEM FRONT BRAKE CABLE CORE	3.49
01622FD	TANDEM FRONT DERAILLEUR CABLE	3.49
01622RB	TANDEM REAR BRAKE CABLE CORE	4.00
01622RD	TANDEM REAR DERAILLEUR CABLE	3.50
01623B	MAGURA CABLE END BARREL	.60
01624A	DRLR CABLE HOUSING BLACK/PER FOOT	.60
01624B	BRAKE CABLE HOUSING BLACK/PER FOOT	.70
01630	ALUMINUM CABLE ELBOW	1.30
01631	STEP FERRULE FOR CAMPY STOP No. 621	.50
01633	DIA-COMPE FRONT CABLE HANGER	1.50

MOUNTAINBIKES PRICE LIST

Compare our discounted prices!

Effective May 28, 1983

These prices are Mail Order only

Prices subject to change

Part #	Item	Price
FREEWHEELS & CHAINRINGS		
01728	NEW WINNER 6-SP REG 13-28	22.00
01730	NEW WINNER 6-SP REG 13-30	22.45
01732	NEW WINNER 6-SP REG 13-32	22.95
01735	NEW WINNER ULTRA-7 12-24	24.95
01738	NEW WINNER ULTRA-7 12-28	25.95
01739	NEW WINNER ULTRA-7 12-30	26.95
01763	UNIGLIDE 5-SP 14-24	13.10
01764	UNIGLIDE 600 5-SP 14-24	13.95
01764A	UNIGLIDE 600 5-SP 13-30	13.95
01765	UNIGLIDE 600 6-SP 13-28	14.95
01765A	UNIGLIDE 600 6-SP 13-30	14.95
01765B	UNIGLIDE 600 6-SP 13-32	14.95
01801	SEDIS-SPORT CHAIN	6.00
01805	D.I.D. LANNER CHAIN	5.50

SEATPOST AND SADDLES

02001	SR LAPRADE SEATPOST 26.8mm	12.50
02051	CAMPAGNOLO SP QUICK RELEASE	17.95
02061	SUNTOUR SP QUICK RELEASE	5.25
02063	SHIMANO SP QUICK RELEASE	12.00
02101	AVOCET MEN'S TOURING I SADDLE	20.95
02102	AVOCET MEN'S TOURING II SADDLE	27.95
02103	AVOCET WOMEN'S TOURING I SADDLE	20.95
02104	AVOCET WOMEN'S TOURING II SADDLE	27.95
02015	AVOCET RACING SADDLE R-1	29.95
02111	BROOKS B-72 SADDLE	27.50
02112	ELINA PADDED LEATHER SADDLE	6.00

HUBS

02502	PHIL HUB PR 130/100mm ENDBOLT	94.00
02503	PHIL QR HUB PR 130/100mm W/O QR	89.00
02503QR	PHIL QR HUB PR 130/100mm CAMP QR	118.00
02521	COOK BROTHERS HUB PR 130/100mm	102.00
02570	SHIMANO DEORE XT HUB PR	42.00
02575	DURA-ACE EX FREEHUB PR	99.95
02575C	DURA-ACE EX FREEHUB COG SET	22.00

RIMS, SPOKES, TIRES

02801	DT No. 14 SS SPOKES 268mm/40	8.00
02801B	DT DB 14/15 SPOKES 268mm/40	11.00
02803	DT No. 14 SS SPOKES 270mm/40	8.00
02803B	DT DB 14/15 SPOKES 270mm/40	11.00
02820	EDCO ALLOY No. 14 NIPPLES/40	4.00
02910S	ARAYA 7 x 24 x 1.75 RIM SILVER	18.50
02911B	ARAYA 26 x 1.75 RIM BLUE	18.50
02911G	ARAYA 26 x 1.75 RIM GOLD	18.50
02911K	ARAYA 26 x 1.75 RIM BLACK	18.50
02911S	ARAYA 26 x 1.75 RIM SILVER	18.50
02921	AMBROSIO 26 x 1.75 RIM	19.95
03141	IRC RACER X-1 26 x 2.125 TIRE	13.95
03142	IRC RACER X-1 26 x 1.75 TIRE	12.95
03201	26 x 1.75 TUBE	2.25
03203	26 x 1.75 PRESTA VALVE TUBE	3.00

Part #	Item	Price
03203G	PRESTA VALVE ADAPTOR GROMMET	.35
03205	PANARACER 26 x 1.75 TIRE	12.95
03206	PANARACER 26 x 2.125 TIRE	13.95
03211	26" RIM STRIP	.35

HANDLEBARS & GRIPS

03501A	RITCHEY BULLMOOSE H/BAR LOW	144.75
03501B	RITCHEY BULLMOOSE H/BAR HIGH	144.75
03520	NITTO BULLMOOSE H/BAR .833"	52.00
03521	NITTO BULLMOOSE H/BAR 22.2mm	52.00
03552	MAGURA L476.21 SILVER H/BAR	34.00
03559	JOE BREEZE HANDLEBAR SHIM	6.50
03560	STEEL HANDLEBAR SHIM	2.00
03712	CHROME BAR END PLUG PAIR	.50
03811	GRAB-ON MX-2 CORE PAIR	3.50
03812	GRAB-ON MX-2 SLEEVE PAIR (THIN)	2.50
03814	GRAB-ON MX-1 FOAM GRIP PAIR	4.90
03821	MAGURA POW-R-GRIP PAIR	5.95

PEDALS

04002	MKS BM-10 PEDALS BLACK	18.00
04011B	SUNTOUR MP-1000 PEDALS BLUE	39.00
04011G	SUNTOUR MP-1000 PEDALS GOLD	39.00
04011S	SUNTOUR MP-1000 PEDALS SILVER	39.00
04012	SUNTOUR MP-1000 BEARING PAIR	7.50
04015	SUNTOUR XC OVAL PEDALS BLACK	26.95
04021B	SR MP-130 PEDALS BLUE	16.00
04021G	SR MP-130 PEDALS GOLD	16.00
04031	TITRON MX RADIAL PEDALS	62.00

HEADSETS

04201	CAMPAGNOLO RECORD HEADSET (ENG)	29.95
04212	EDCO COMPETITION HEADSET (ENG)	32.35
04231	SHIMANO 600-EX HEADSET (ENG)	17.95
04251	TAILWIND HEADSET SEAL PAIR	2.25

BRAKES

04320	SHIMANO CANTILEVER BRAKE SET	20.95
04340	DIA-COMPE CANTILEVER BRAKE SET	12.95

ACCESSORIES

05011	SILCA PUMP WITH PRIMUS TIP	12.00
05012P	SILCA PUMP TIP (PRESTA VALVE)	4.00
05012S	PRIMUS PUMP TIP (SCHRADER VALVE)	4.00
05030	BLACKBURN BC-1 BOTTLE CAGE	5.50
05031B	BLACKBURN SX-1 REAR RACK BLACK	30.50
05031S	BLACKBURN SX-1 REAR RACK SILVER	29.00
05033B	BLACKBURN LOWRIDER BLACK	30.50
05033S	BLACKBURN LOWRIDER SILVER	31.50
05035	BLACKBURN RACK STRAP	6.00

(SMALL PARTS ARE AVAILABLE)

PARTS ORDERS

Orders are usually shipped within 36 hours. Please write or type your name and address clearly, using street address (no box numbers, please). You may phone in orders to our order desk (415-459-2247) Monday through Friday, 10:00-5:30 Pacific time.

Shipping within the continental U.S. will be UPS, C.O.D. unless prepaid. California residents must add 6% sales tax. For faster service on parts orders you may specify UPS Blue Label air service at extra cost. This service is not available in California, Washington, Oregon, Idaho, Montana, Utah, or Northern Nevada.

Prepaid shipping and handling charges on parts orders are:

\$2.50 on orders from \$10.00 to \$25.00
\$3.00 on orders from \$25.00 to \$50.00
\$4.00 on orders over \$50.00

Cash refunds will be made on items prepaid but out of stock. No backorders or substitutions will be made unless customer so requests.

SHIPPING INFORMATION

Framesets receive the following attention:

1. Tubing is cleaned internally of scale, sand, flux, and dirt.
2. Seat tube is reamed to insure roundness, necessary for proper function of seatpost quick-release.
3. Bottom bracket and headset cups are faced, cleaned and installed.
4. Dropout eyelets, bottle and rack mount threads are chased and Grade 8 socket-head cap screws are installed.
5. Each tube is wrapped in heavy-duty cardboard and the frame is packed in a double-ply box. A block is placed between the rear dropouts.

COMPLETE BICYCLES

Every bicycle assembled by K & F MOUNTAINBIKES is built up by one mechanic at a time, and each mechanic is familiar with all aspects of the product, from frame preparation to all-out riding. All cables are cut to exact length, all factory protective sealants are removed and components are lubricated with K & F MOUNTAINBIKES-approved lubricants. Bicycles are all test-ridden, then cleaned and readjusted.

PACKING FOR SHIPMENT

1. Handlebars, pedals, saddle and front wheel are removed. A spacer block is placed between the fork tips.
2. All painted surfaces are wrapped in cardboard; the entire bike is padded and packed in the appropriate size box.
3. We guarantee--no scratches or dents.

Complete bicycles are too large for UPS shipment. We ship by Greyhound or air freight. The customer will be notified on completion of the bicycle; bike will be shipped on receipt of payment. (On air freight shipments you may pay for merchandise and shipping C.O.D. with cash or certified check.) We will ship to any part of the continental United States at a flat rate, so you may figure shipping costs easily. Rates are computed by time zone.

Zone	Bus	Air
Pacific	\$10.00	\$40.00
Rocky Mtn.	\$30.00	\$60.00
Central	\$50.00	\$70.00
Eastern	\$60.00	\$85.00

All retail bicycle orders must be accompanied by a \$300 deposit. All cancelled orders for K & F MOUNTAINBIKES are subject to a charge of \$75 on return of deposit. California residents add 6% sales tax to total cost.

